

GOETINCK

CONSTRUCTION 2014

CITY/COUNTRY

Brussels / Belgium

PRODUCT GROUP

skylight & rooflight

PRODUCT

shed roofs

AREA

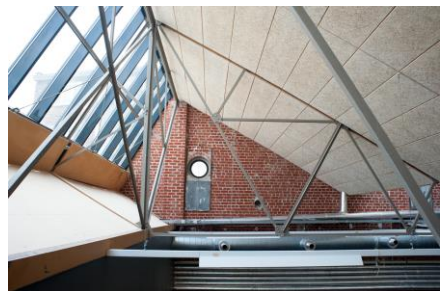
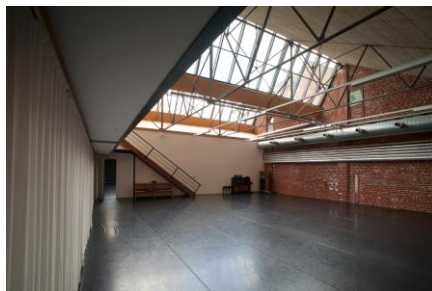
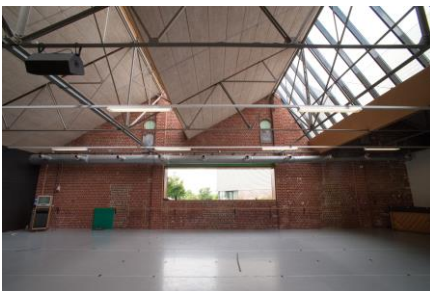
310m²

ARCHITECT

LOW Architecten

CUSTOMER

Goetinck



TECHNICAL DESCRIPTION

Aluminium framed saw-tooth roofs with double glazing and ventilation.

CONTEXT

A dance hall with an industrial character. Saw-tooth roofs allow high natural light levels to permeate deep into the structure and also provide plentiful non-glazed surface areas for other uses e.g. to apply acoustic materials. Saw-tooth roofs also lend themselves to highly original lighting schemes.



FORZON
THE SKY HAS NO LIMITS