

SHOPPING ZUID

CONSTRUCTION 2002

CITY/COUNTRY

Ghent / Belgium

PRODUCT GROUP

glazen dak

PRODUCT

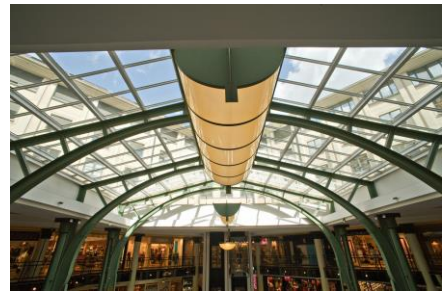
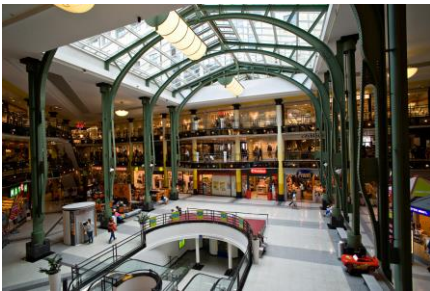
atrium

AREA

700m²

CUSTOMER

Urbis



TECHNICAL DESCRIPTION

What seems like a simple atrium at first sight requires closer inspection. The creation of a glass roof requires significant practical expertise during the installation. Safety and accessibility during installation create myriad challenges in such projects.

The combination of a classic glass roof incorporating smoke and heat exhaust systems and a maintenance structure required comprehensive examination during the design phase.

CONTEXT

Glazed atria are a popular design element in shopping centres. These impressive structures attract the attention of potential customers where the voluminous, light-filled space significantly enhances the shopping experience.



FORZON
THE SKY HAS NO LIMITS